

O
P
P
O
S
I
T
I
O
N

E
X
H
I
B
I
T

GG

CSI PROPOSED PROGRAM USAGE CHART: FLOORS 2 – 4

Floor	Classroom	SF	Program	Hours	Class Size
2nd Fl.	Rm. #1 NW corner	326.89	Community Toddler Program	M-TH 8AM-6PM FRI- 8AM-6PM SAT- 9AM-Noon	60+ children overall in toddler program; children will be grouped age- appropriately & by activity as required; Maximum projected capacity: 9 (provides approx. 35ft/child)
	Rm. #2 North Center	323.54	Community Toddler Program	M-TH 8AM-6PM FRI- 8AM-6PM SAT- 9AM-Noon	Maximum projected capacity: 9 (provides approx. 35ft/child)
	Rm. #3 NE corner	318.21	Community Toddler Program	M-TH 8AM-6PM FRI- 8AM-6PM SAT- 9AM-Noon	Maximum projected capacity: 9 (provides approx. 35ft/child)
	Rm. #4 SE corner	408.06	Community Toddler Program	M-TH 8AM-6PM FRI- 8AM-6PM SAT- 9AM-Noon	Maximum projected capacity: 12 (provides approx. 35ft/child)
	Rm. #5 South Center	434.41	Community Toddler Program	M-TH 8AM-6PM FRI- 8AM-6PM SAT- 9AM-Noon	Maximum projected capacity: 12 (provides approx. 35ft/child)
	Rm. #6 SW corner	426.31	Community Toddler Program	M-TH 8AM-6PM FRI- 8AM-6PM	Maximum projected capacity: 12 (provides approx. 35ft/child)

CAL. NO.

2008 MAR 11 11:36:23

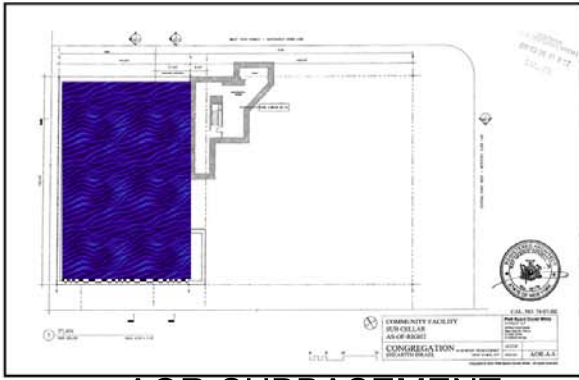
CSI PROPOSED PROGRAM USAGE CHART: FLOORS 2 – 4

Floor	Classroom	SF	Program	Hours	Class Size
3 rd Fl.	Rm. #7 NW corner	391.57	CSI Hebrew School	SUN- 9:30AM-Noon TH- 3:30PM-6:00PM	Maximum projected capacity: 11-16 (provides approx. 25-35ft/child)
			CSI Youth Group	SAT- 9AM-Noon	
			CSI Youth Tutoring	MON-FRI- unspecified time	
	Rm. #8 North Center	278.43	CSI Hebrew School	SUN- 9:30AM-Noon TH- 3:30PM-6:00PM	Maximum projected capacity: 8-11 (provides approx. 25-35ft/child)
			CSI Youth Group	SAT- 9AM-Noon	
			CSI Youth Tutoring	MON-FRI- unspecified time	
	Rm. #9 NE corner	318.21	CSI Hebrew School	SUN- 9:30AM-Noon TH- 3:30PM-6:00PM	Maximum projected capacity: 9-13 (provides approx. 25-35ft/child)
			CSI Youth Group	SAT- 9AM-Noon	
			CSI Youth Tutoring	MON-FRI- unspecified time	
	Rm. #10 SE corner	408.06	CSI Hebrew School	SUN- 9:30AM-Noon TH- 3:30PM-6:00PM	Maximum projected capacity: 12 (provides approx. 35ft/child)
	Rm. #11 South Center	587.72	CSI Hebrew School	SUN- 9:30AM-Noon TH- 3:30PM-6:00PM	Maximum projected capacity: 17 (provides approx. 35ft/child)
	Rm. #12 SW corner	426.31	CSI Hebrew School	SUN- 9:30AM-Noon TH- 3:30PM-6:00PM	Maximum projected capacity: 12- 17 (provides approx. 25ft/adult; 35ft/child)
			CSI Youth Group	SAT- 9AM-Noon	
			CSI Youth Tutoring	MON-FRI- unspecified time	

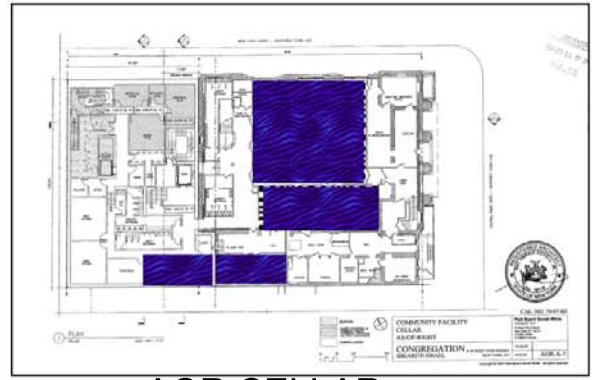
**Space Available for Educational Programmatic Needs in AOR Not Included in
Applicants March 11, 2008 Chart of Floors 2-4**

	AOR-A		Area	Suitable For	
New Banquet Hall	AOR-A-6	New	6640	Space could subdivided with removable partitions and used for recreation, meetings, classes	Sub-A
Babysitting Room	AOR-A-7	New	384	Available for Toddler Program	Cel-d
Levy Auditorium	AOR-A-7	Existing	2657	Large Classes Adult and Youth, Meeting	Cel-B
Levy Auditorium Area	AOR-A-7	Existing Reconfigure	1218	Space in new building could permit some areas around Levy Auditorium to be reprogrammed for programmatic uses.	Cel-C Cel-D
Small Synagogue Extension	AOR-A-8	New	1237	Classes and meetings, all ages, could be subdivided with movable partitions into three rooms of -420 sq feet.	1-C
Elias Meeting Room	AOR-A-8	Existing	768	Large Older Children and Adult Classes Meetings	1-E
Archive	AOR-A-8	New	537	Tutoring of 1-4 students –	1-G
Rabbi's Study	AOR-A-8	Existing in Parsonage	163	Tutoring of 1-4 students	1-F
Offices of Rabbis etc.	AOR-A-8	New	218	Tutoring of 1-4 students	1-A
Elevator- Residential 1-4	AOR-A-8-11	New	1197		Cel-A, 1-A, 2-B, 3-A;4-B
Residence Floors 2-4	AOR-A-9	Existing in Parsonage	2428		2-A; 3-B; 3-C
Fourth Floor Caretakers Apt	AOR-A-11	New	1244	Apt could be moved to Parsonage or elsewhere	4-A
As of Right Fifth Floor	AOR-A-12	New	4512		5-A
As of Right Sixth Floor	AOR-A-13	New	3082		6-A

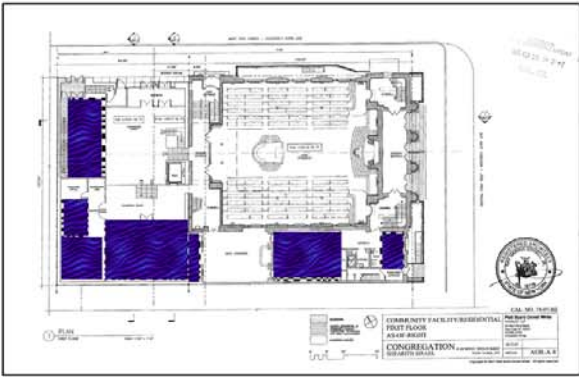
Programmatic Spaces Available for Educational Purposes In As of Right Scheme A
Not Addressed by Applicant's 3/1/07 Table Which Only Includes Classrooms on FI 2-4



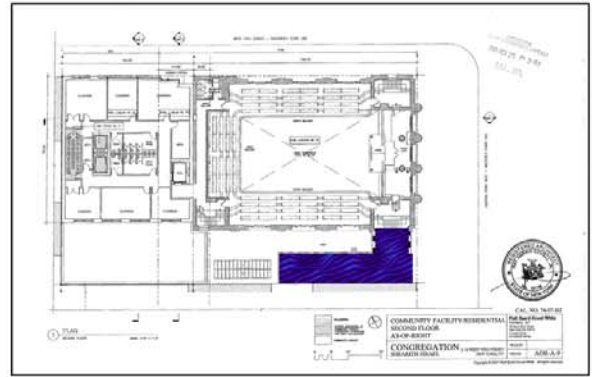
AOR-SUBBASEMENT



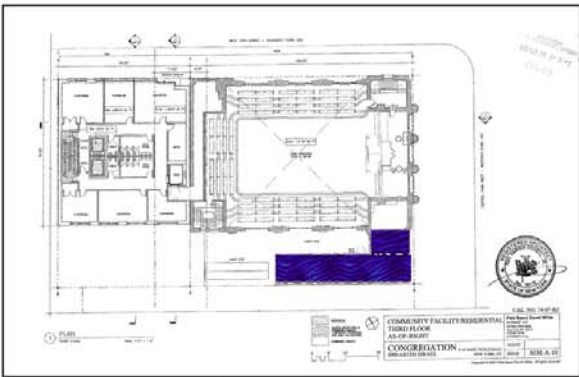
AOR CELLAR



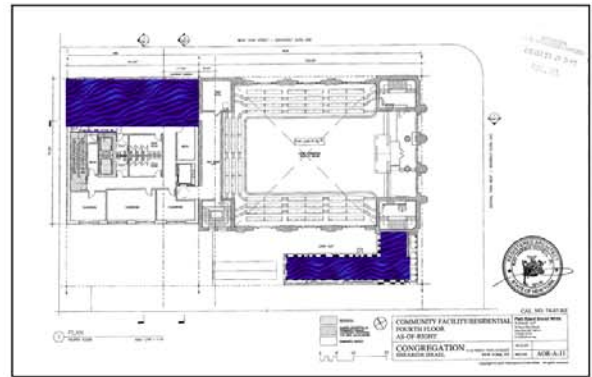
AOR-1ST



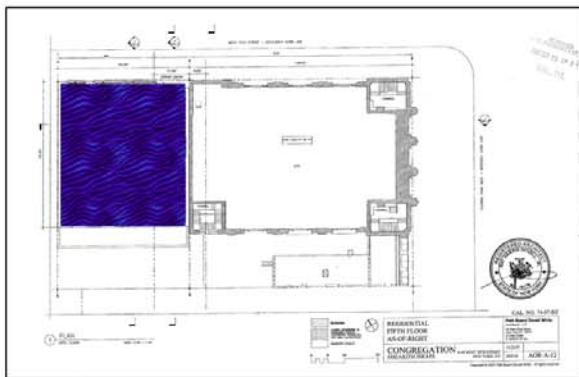
AOR-2ND



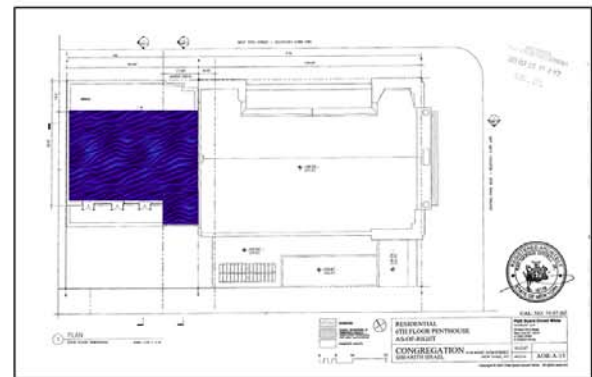
AOR-3RD



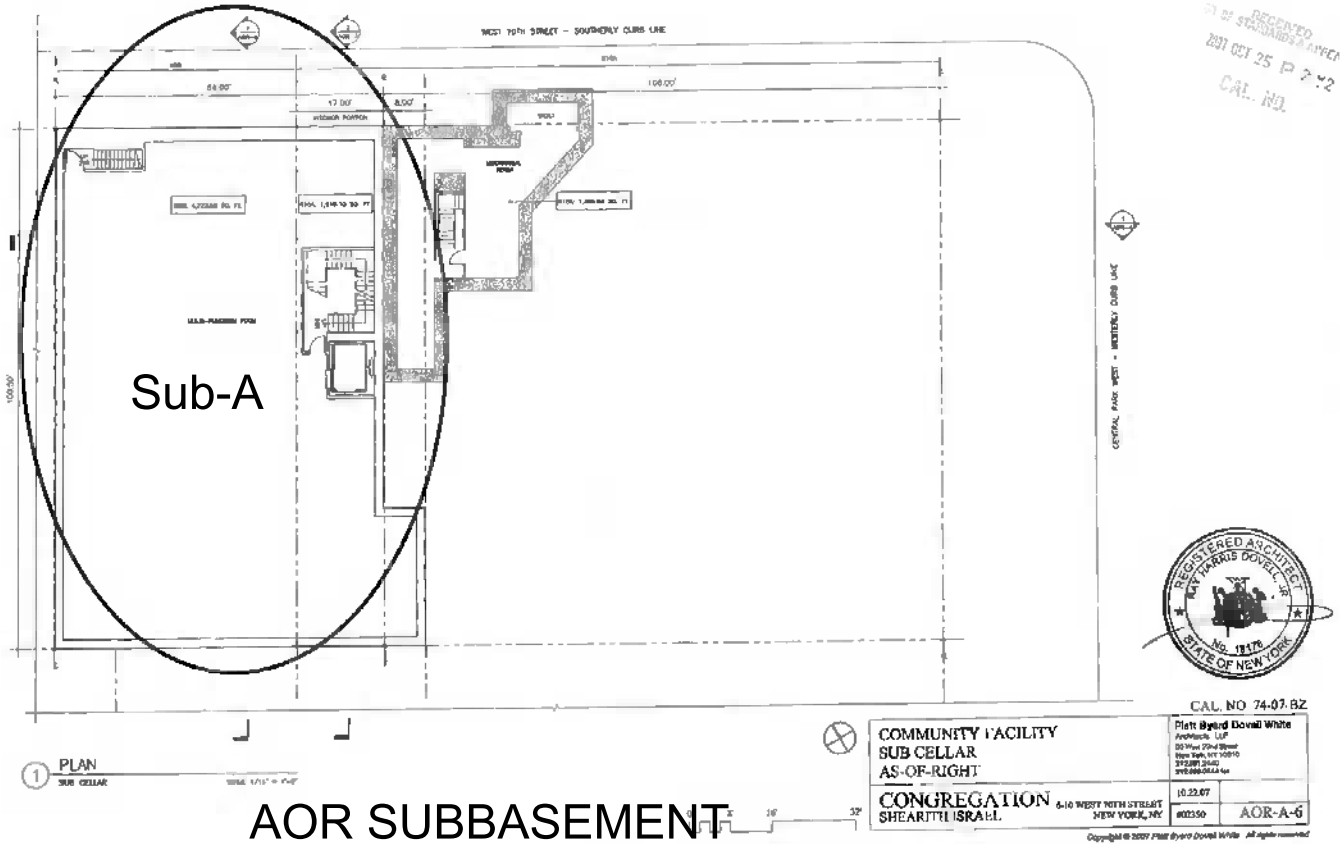
AOR-4TH



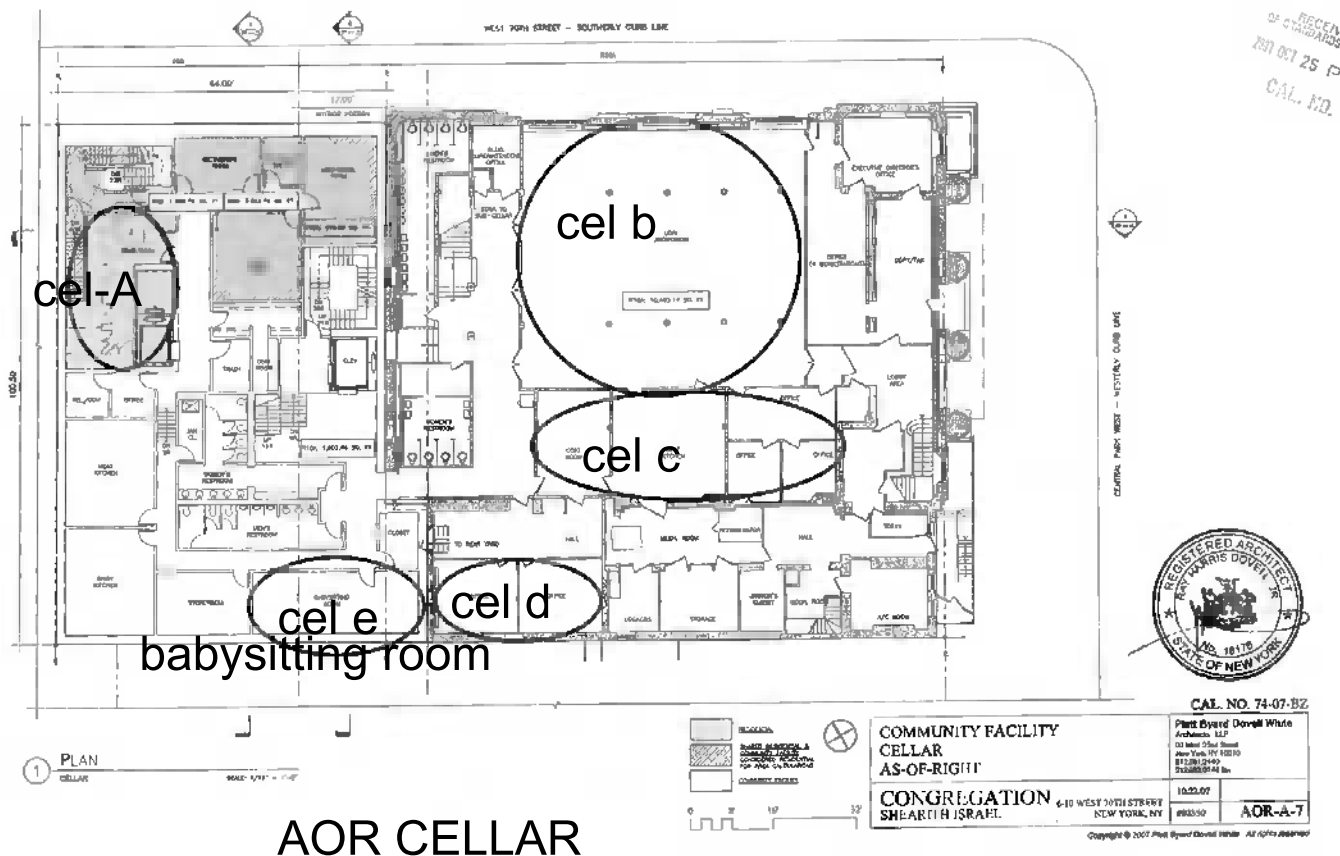
AOR-5TH



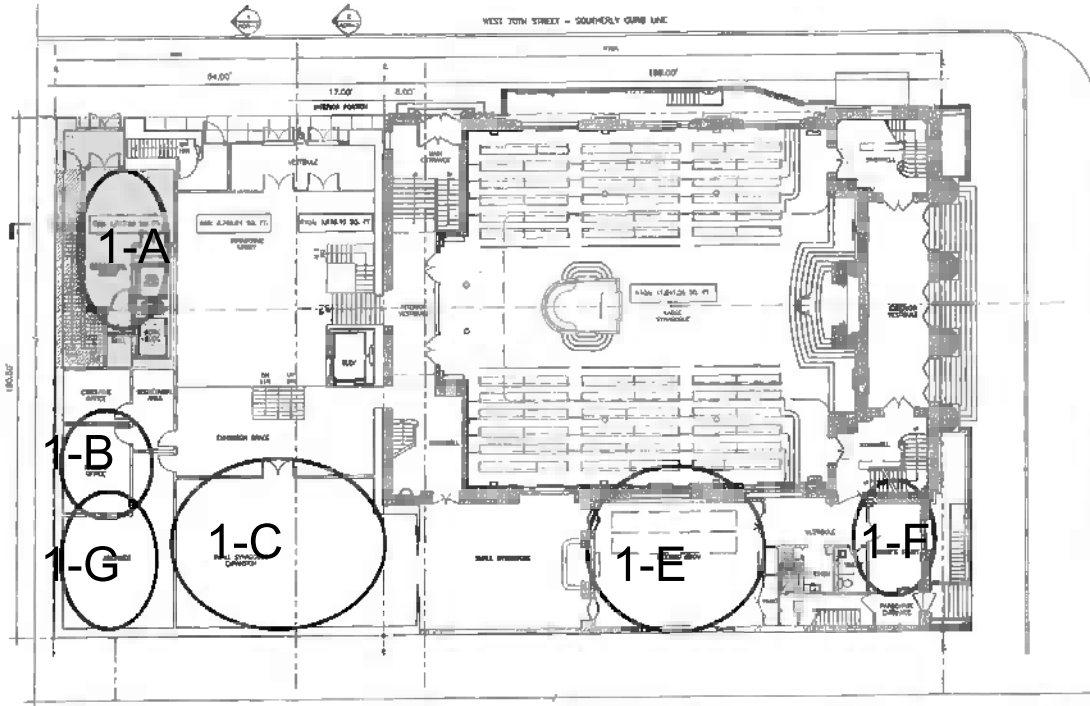
AOR-6TH



AOR SUBBASEMENT



AOR CELLAR



RECEIVED
 201 OCT 25 P 2:2
 CAL. NO.

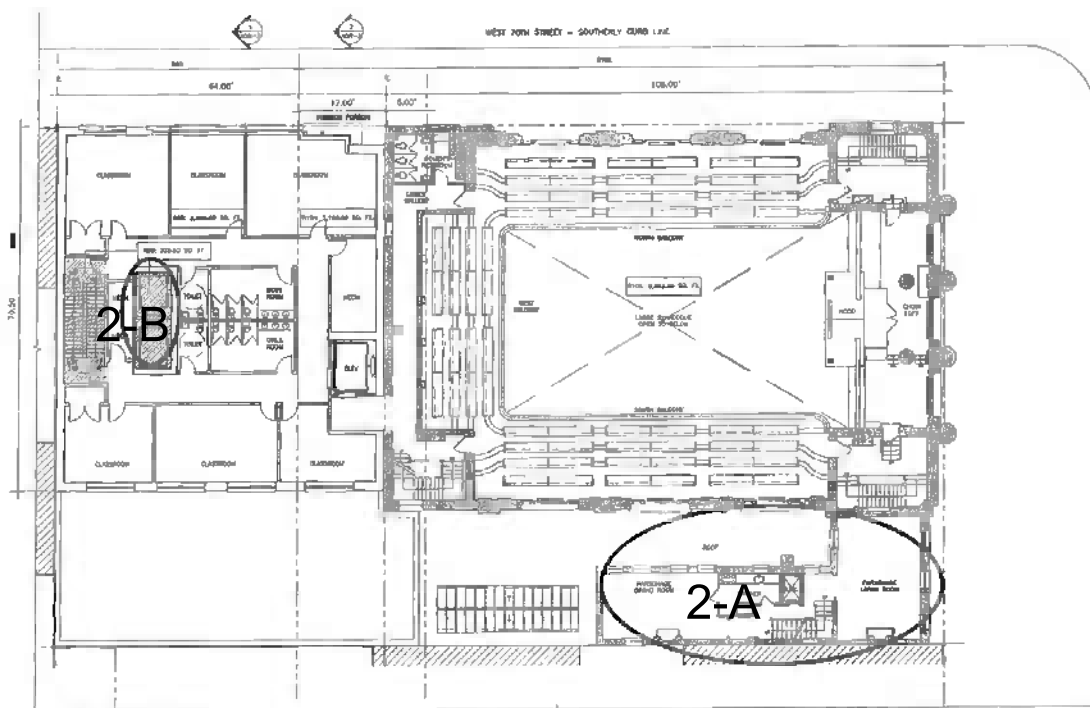


1 PLAN
 FIRST FLOOR
 SCALE: 1/8" = 1'-0"

AOR 1ST FLOOR

COMMUNITY FACILITY/RESIDENTIAL FIRST FLOOR AS-OF-RIGHT	Platt Byard Dove & White Architects LLP 30 West 23rd Street New York, NY 10011 212 691 2300 975 822 0144 fax
CONGREGATION SHEARITH ISRAEL	10 WEST 20TH STREET NEW YORK, NY 10011 AOR-A-8

Copyright © 2007 Platt Byard Dove & White. All rights reserved.



RECEIVED
 201 OCT 25 P 2:02
 CAL. NO.



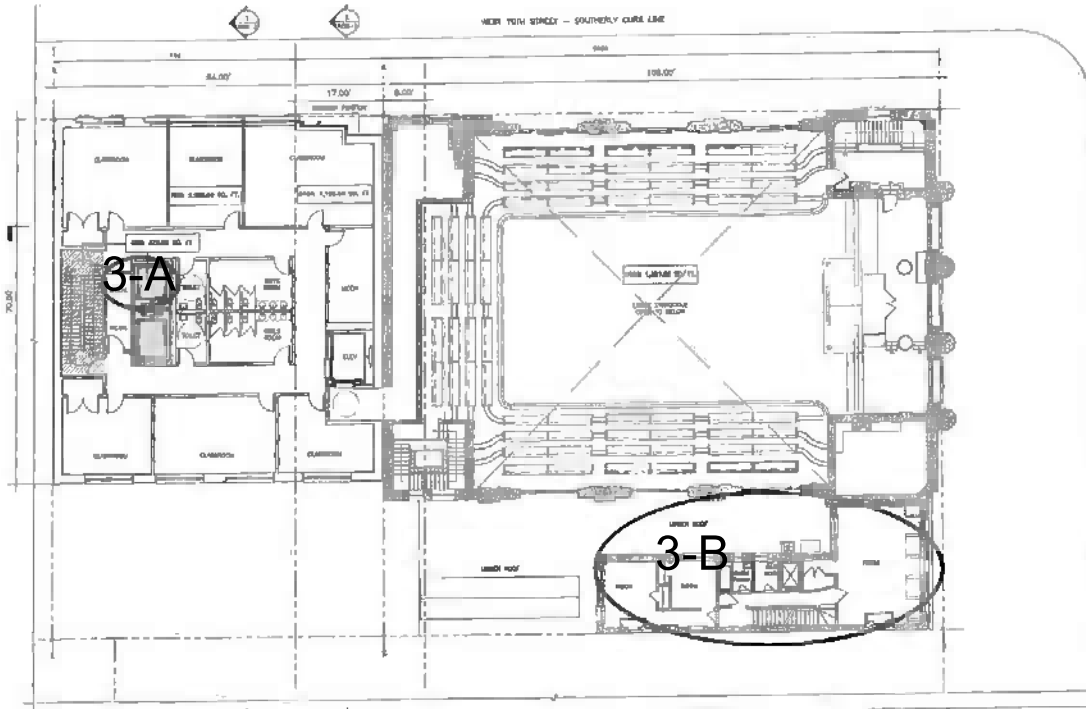
1 PLAN
 SECOND FLOOR
 SCALE: 1/8" = 1'-0"

AOR 2ND FLOOR

COMMUNITY FACILITY/RESIDENTIAL SECOND FLOOR AS-OF-RIGHT	Platt Byard Dove & White Architects LLP 30 West 23rd Street New York, NY 10011 212 691 2300 975 822 0144 fax
CONGREGATION SHEARITH ISRAEL	10 WEST 20TH STREET NEW YORK, NY 10011 AOR-A-9

Copyright © 2007 Platt Byard Dove & White. All rights reserved.

RECEIVED
STATE OF NEW YORK
2011 OCT 25 P 2:42
CPL. NO.



CENTRAL HALL - WEST - WESTERN CORNER LINE



1 PLAN
THIRD FLOOR
SCALE: 1/8" = 1'-0"

AOR 3RD



COMMUNITY FACILITY/RESIDENTIAL
THIRD FLOOR
AS-OF-RIGHT

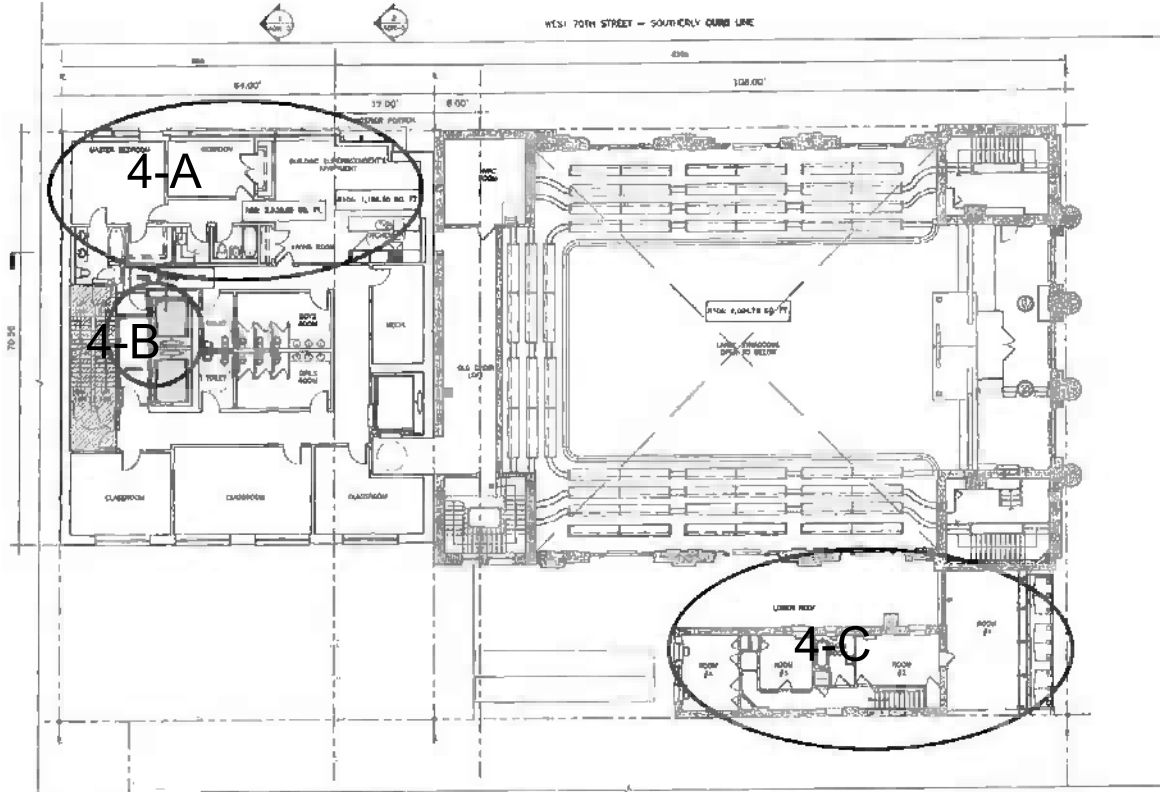
CONGREGATION
SHEARITH ISRAEL

6-10 WEST 70TH STREET
NEW YORK, NY
10023-50

10.22.07
102350
CAL. NO. 74-07-B2
Platt Byard Dove White
Architects LLP
20 West 70th Street
New York, NY 10023
212.881.5940
917.885.0188 fax

Copyright © 2007 Platt Byard Dove White. All rights reserved.

RECEIVED
STATE OF NEW YORK
2011 OCT 25 P 2:42
CPL. NO.



CENTRAL HALL WEST - WESTERN CORNER LINE



1 PLAN
FOURTH FLOOR
SCALE: 1/8" = 1'-0"

AOR 4TH



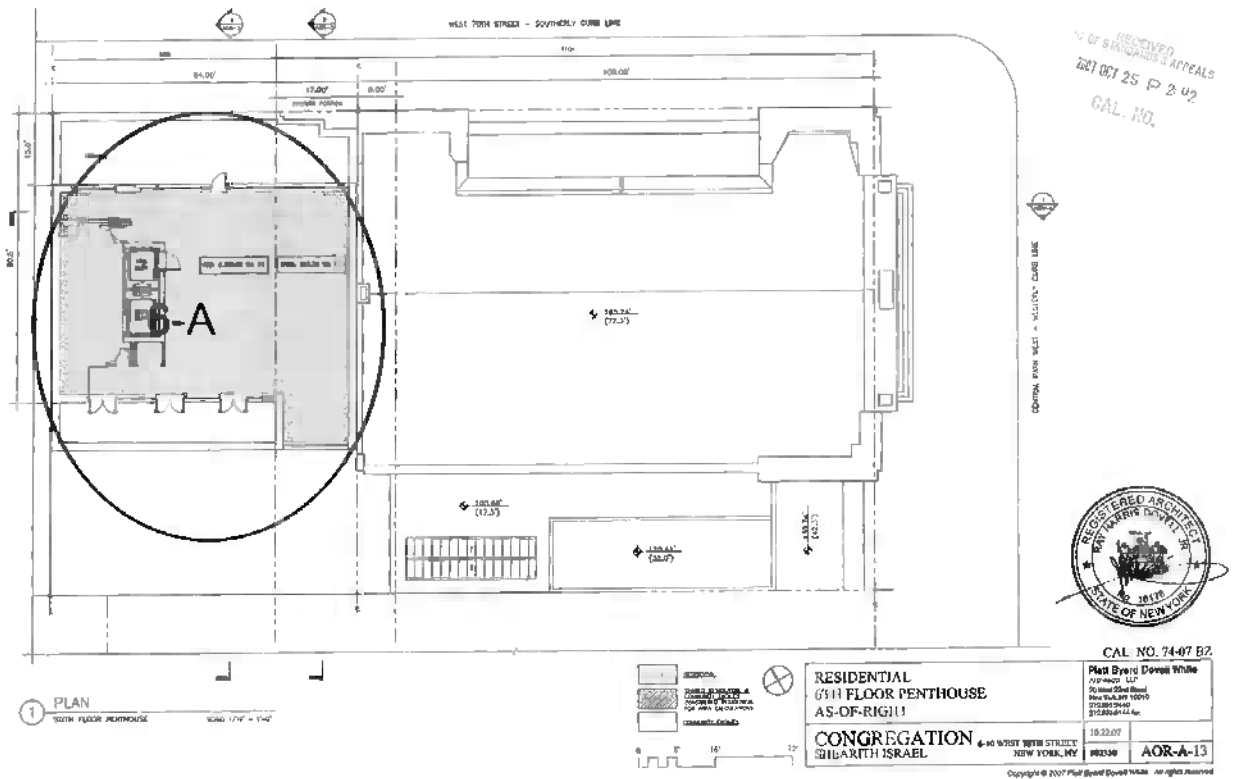
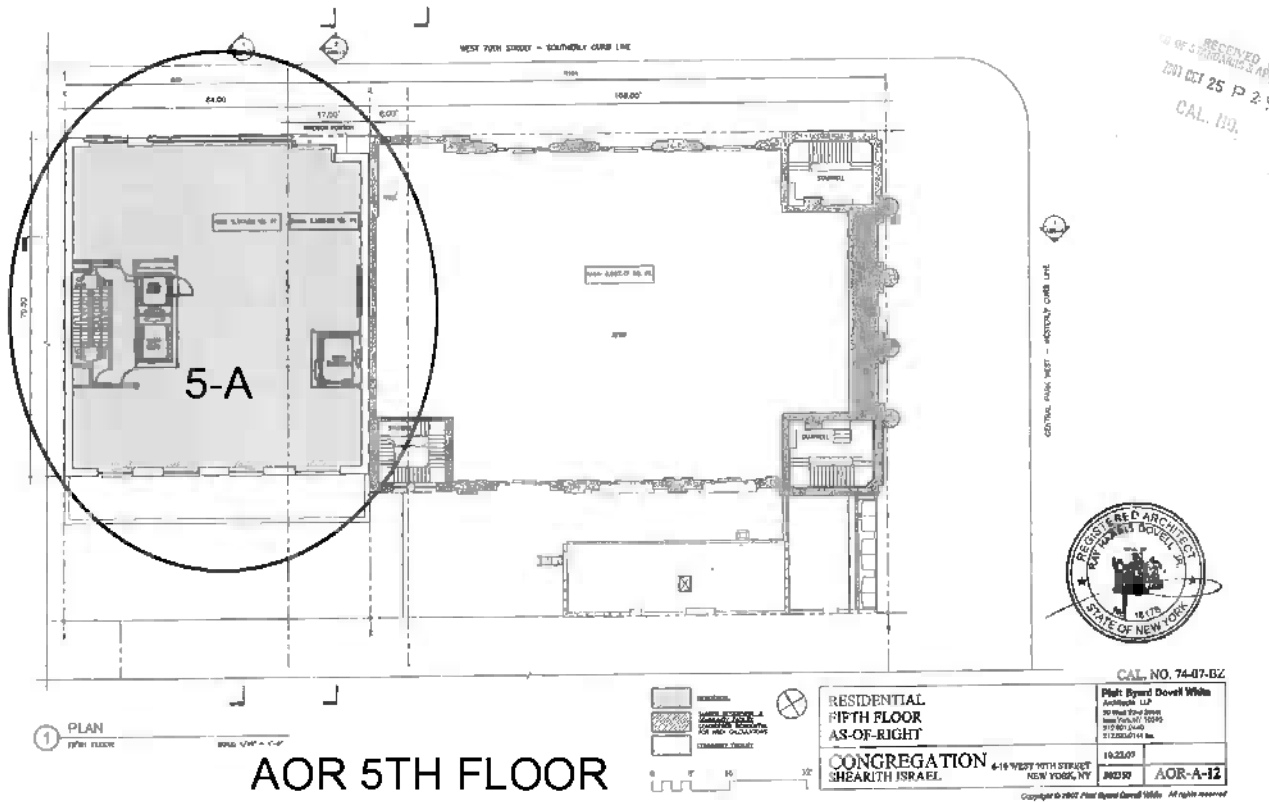
COMMUNITY FACILITY/RESIDENTIAL
FOURTH FLOOR
AS-OF-RIGHT

CONGREGATION
SHEARITH ISRAEL

6-10 WEST 70TH STREET
NEW YORK, NY
10023-50

10.22.07
102350
CAL. NO. 74-07-B2
Platt Byard Dove White
Architects LLP
20 West 70th Street
New York, NY 10023
212.881.5940
917.885.0188 fax

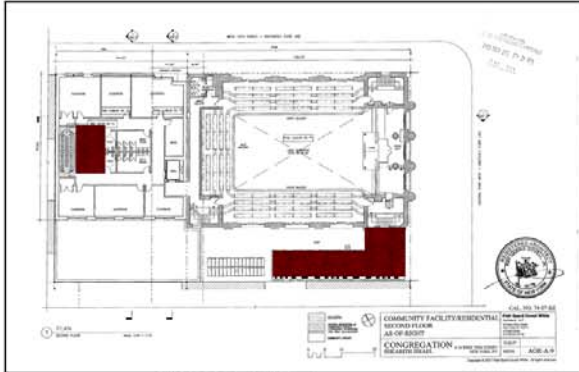
Copyright © 2007 Platt Byard Dove White. All rights reserved.



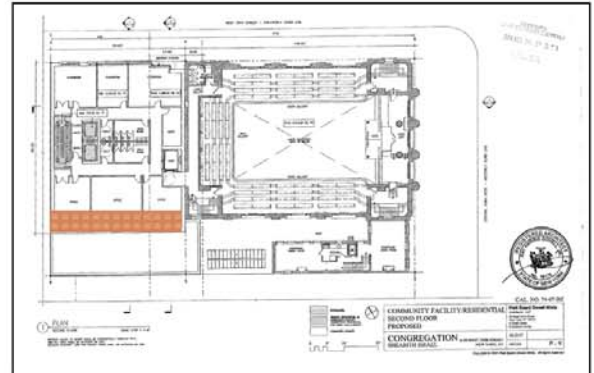
Spaces On Floors 2-4 As Of Right Scheme Available for Educational Purposes But Not Shown in Applicants March 11, 2008 Table

Compared to

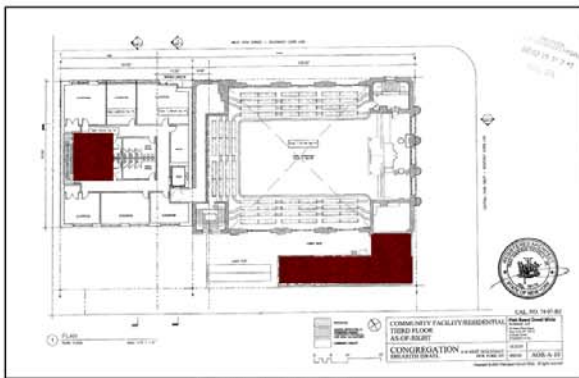
Rear Yard Variances for Proposed Scheme Floors 2, 3, and 4



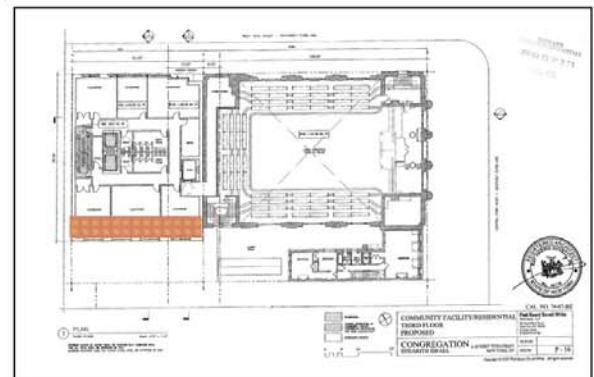
AOR-2ND



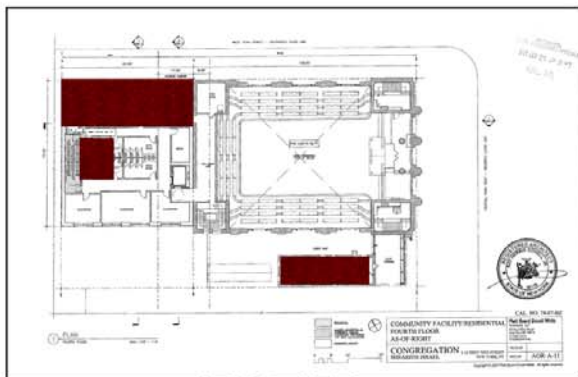
PROPOSED 2ND



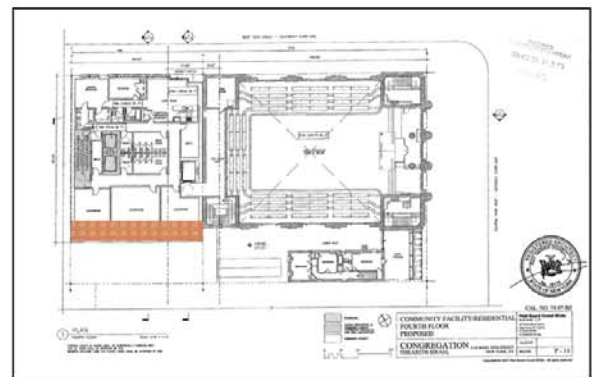
AOR-3RD



PROPOSED 3RD

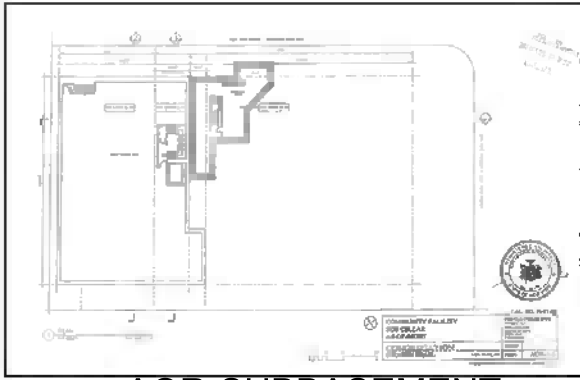


AOR-4TH

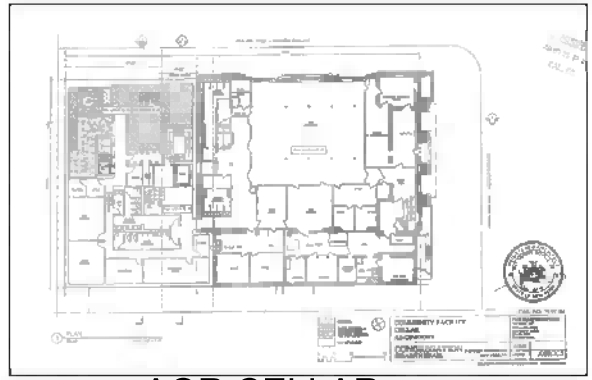


PROPOSED 4TH

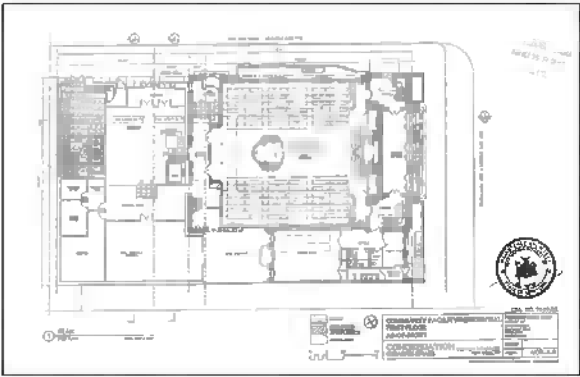
Classrooms on Floors 2-4 of As-Of-Right Scheme C
Note - South Classrooms Reduced from 3 to 2 classrooms



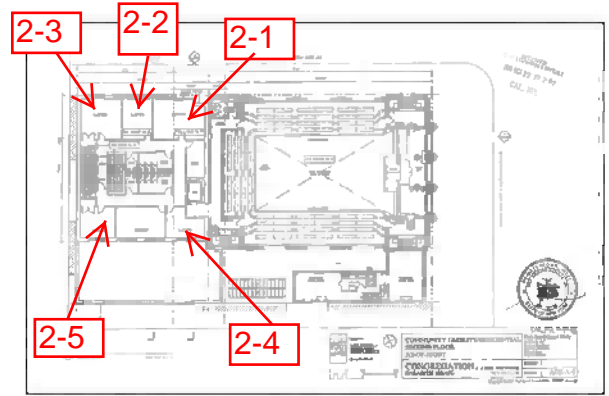
AOR-SUBBASEMENT



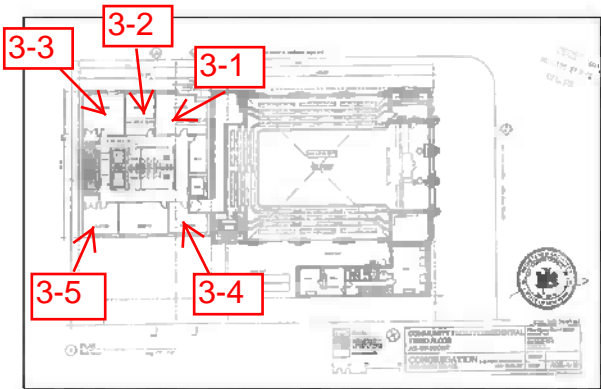
AOR CELLAR



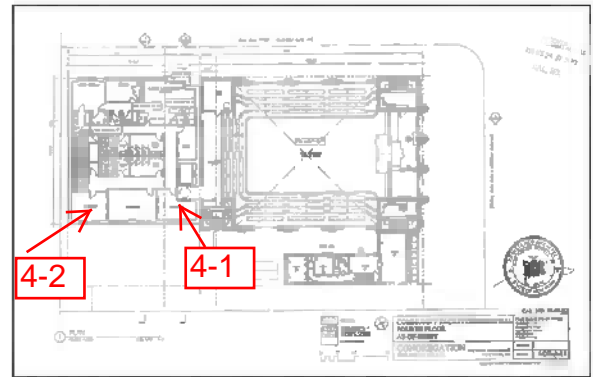
AOR-1ST



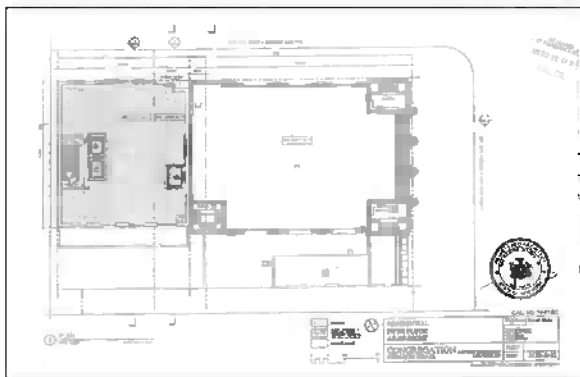
AOR-2ND



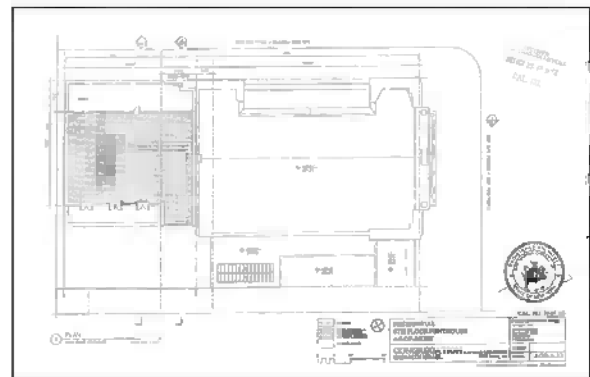
AOR-3RD



AOR-4TH

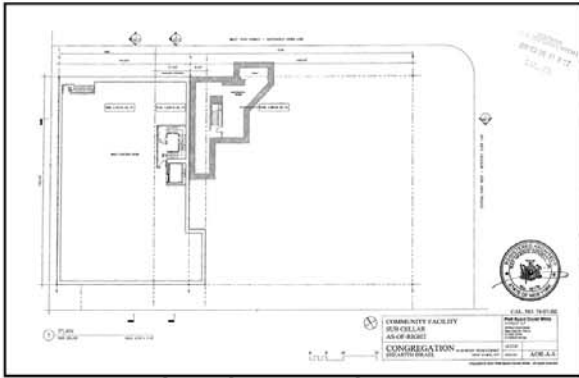


AOR-5TH



AOR-6TH

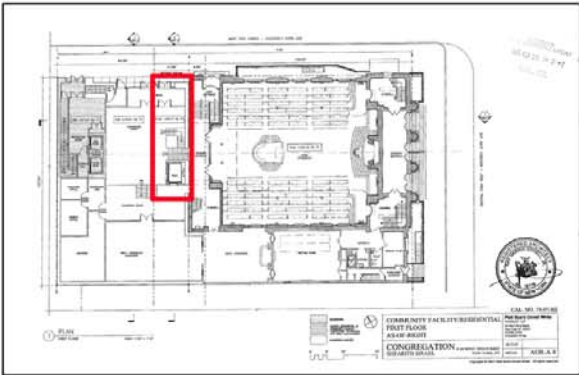
AREAS IN AOR-C SCHEME REQUIRED TO RESOLVE
CIRCULATION, ACCESS, AND ADA ACCESSIBILITY



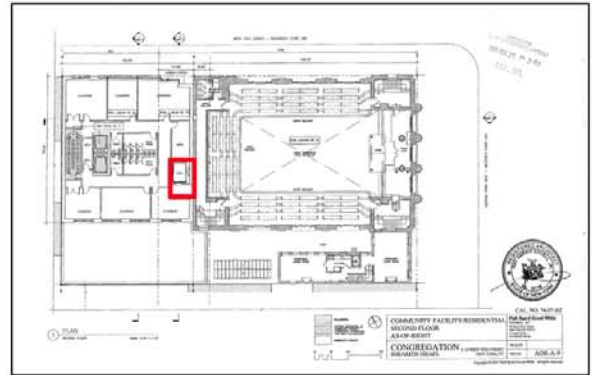
AOR-SUBBASEMENT



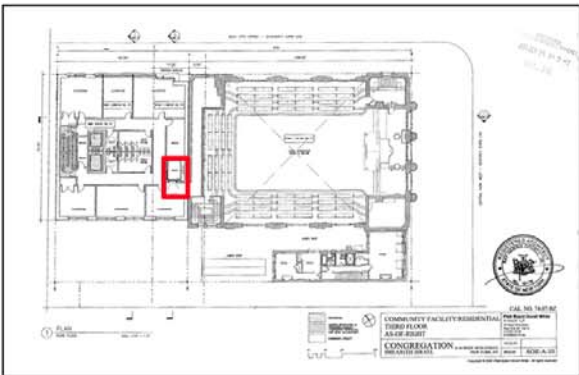
AOR CELLAR



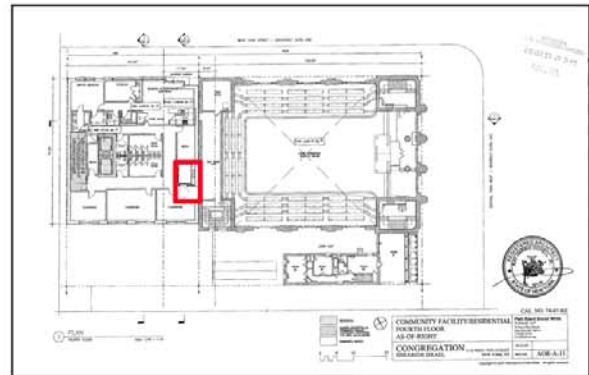
AOR-1ST



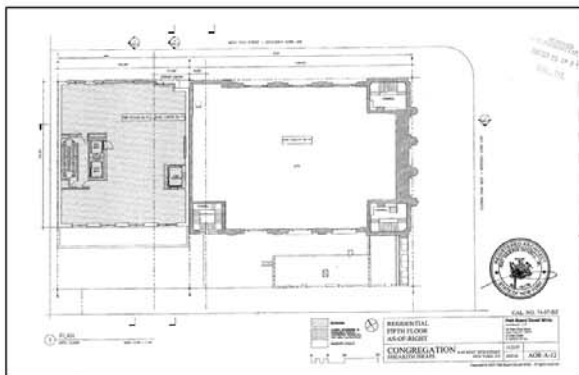
AOR-2ND



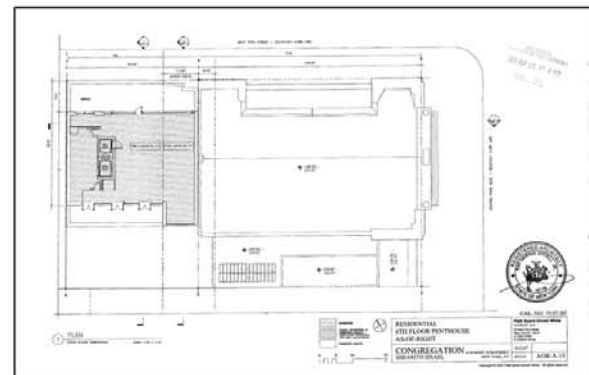
AOR-3RD



AOR-4TH



AOR-5TH



AOR-6TH