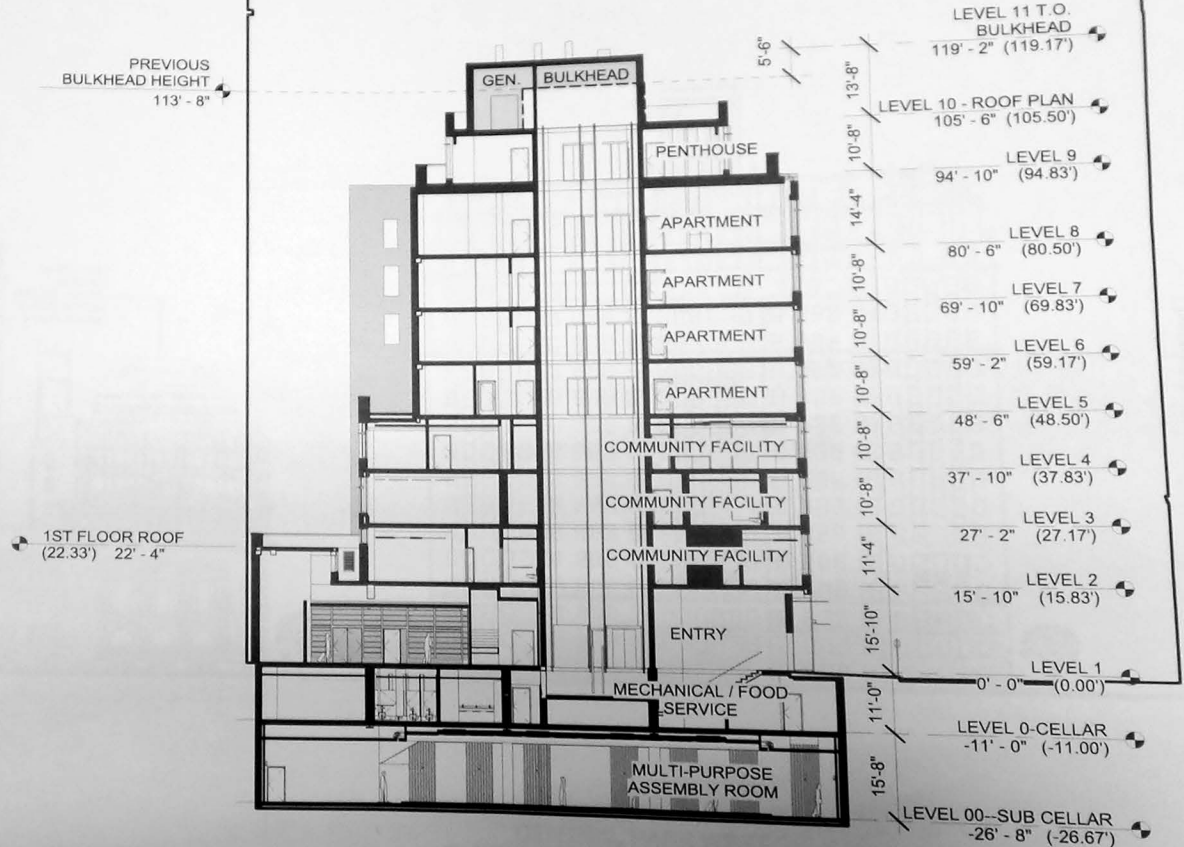


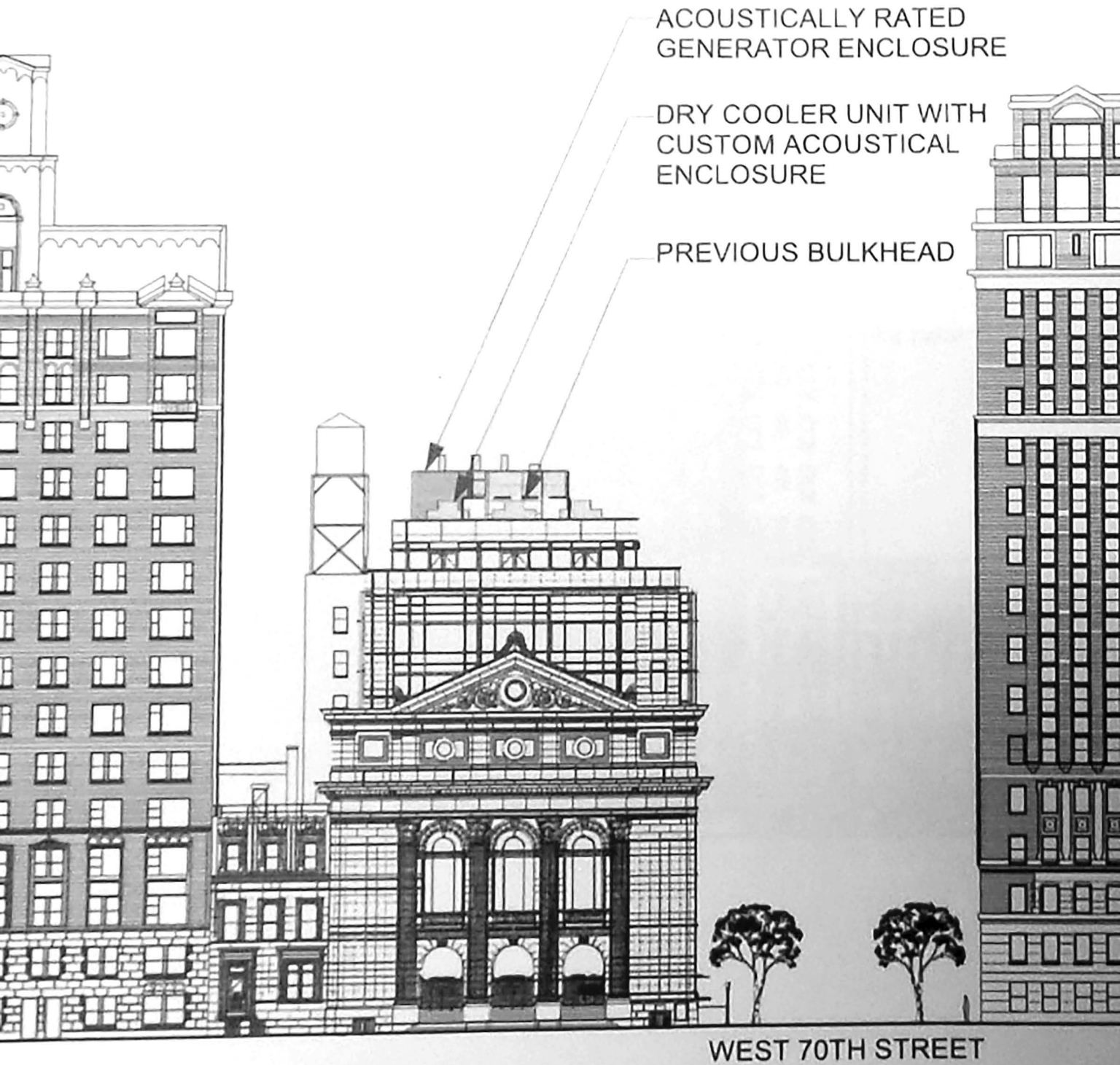
MISC-01
LPC SUBMISSION 2013

NORTH/SOUTH SECTION
CHANGES INDICATED ON THIS SHEET

- HEIGHT & EXTENT OF BULKHEAD
- HEIGHT OF ROOFTOP MECHANICAL EQUIPMENT



MISC-02
LPC SUBMISSION 2013



MISC-03

LPC SUBMISSION 2013

DRY COOLER UNIT WITH CUSTOM
ACOUSTICAL ENCLOSURE

BULKHEAD

PREVIOUS
BULKHEAD HEIGHT

113' - 8"

LEVEL 11 T.O.
BULKHEAD
119' - 2" (119.17')

LEVEL 10 - ROOF PLAN
105' - 6" (105.50')

LEVEL 9
94' - 10" (94.83')

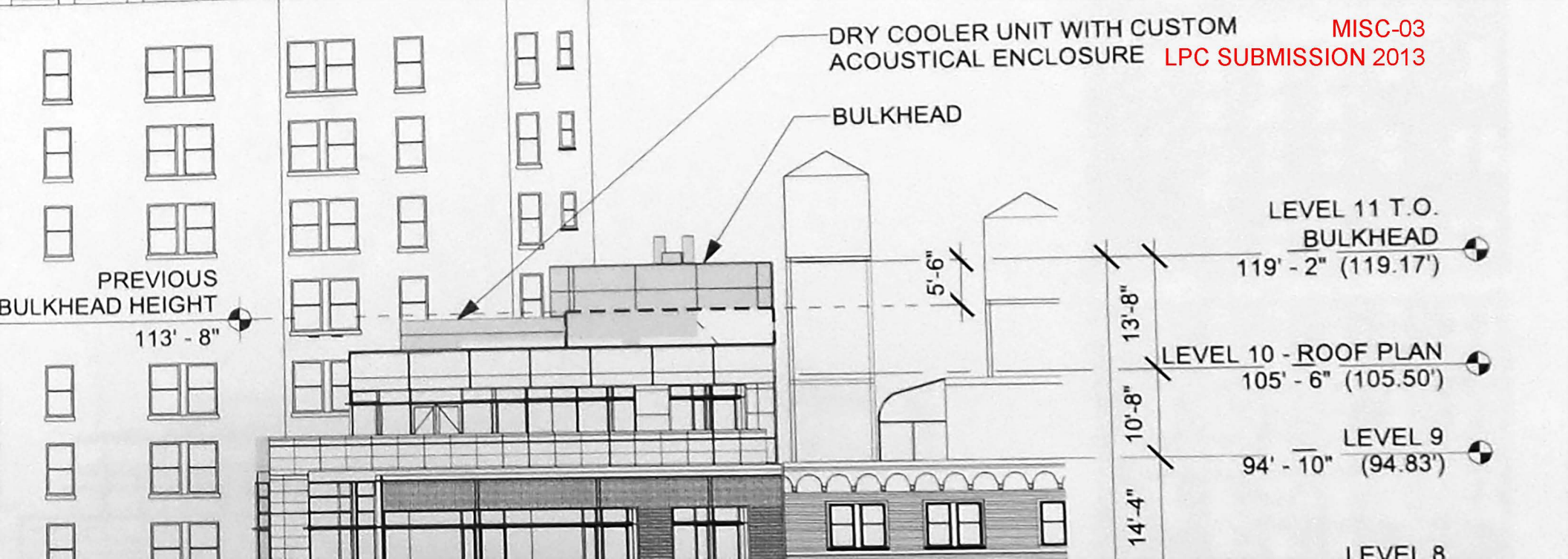
LEVEL 8

5'-6"

13'-8"

10'-8"

14'-4"



MISC-04
LPC SUBMISSION 2013

PREVIOUS
BULKHEAD HEIGHT
113' - 8"

DRY COOLER UNIT WITH CUSTOM
ACOUSTICAL ENCLOSURE

BULKHEAD

5'-6"

LEVEL 11 T.O.
BULKHEAD

119' - 2" (119.17')

LEVEL 10 - ROOF PLAN

105' - 6" (105.50')

LEVEL 9

94' - 10" (94.83')

LEVEL 8

80' - 6" (80.50')

LEVEL 7

69' - 10" (69.83')

LEVEL 6

59' - 2" (59.17')

LEVEL 5

48' - 6" (48.50')

LEVEL 4

37' - 10" (37.83')

LEVEL 3

27' - 2" (27.17')

LEVEL 2

15' - 10" (15.83')

LEVEL 1

0' - 0" (0.00')

119'-2"

13'-8"

10'-8"

14'-4"

10'-8"

10'-8"

10'-8"

10'-8"

10'-8"

10'-8"

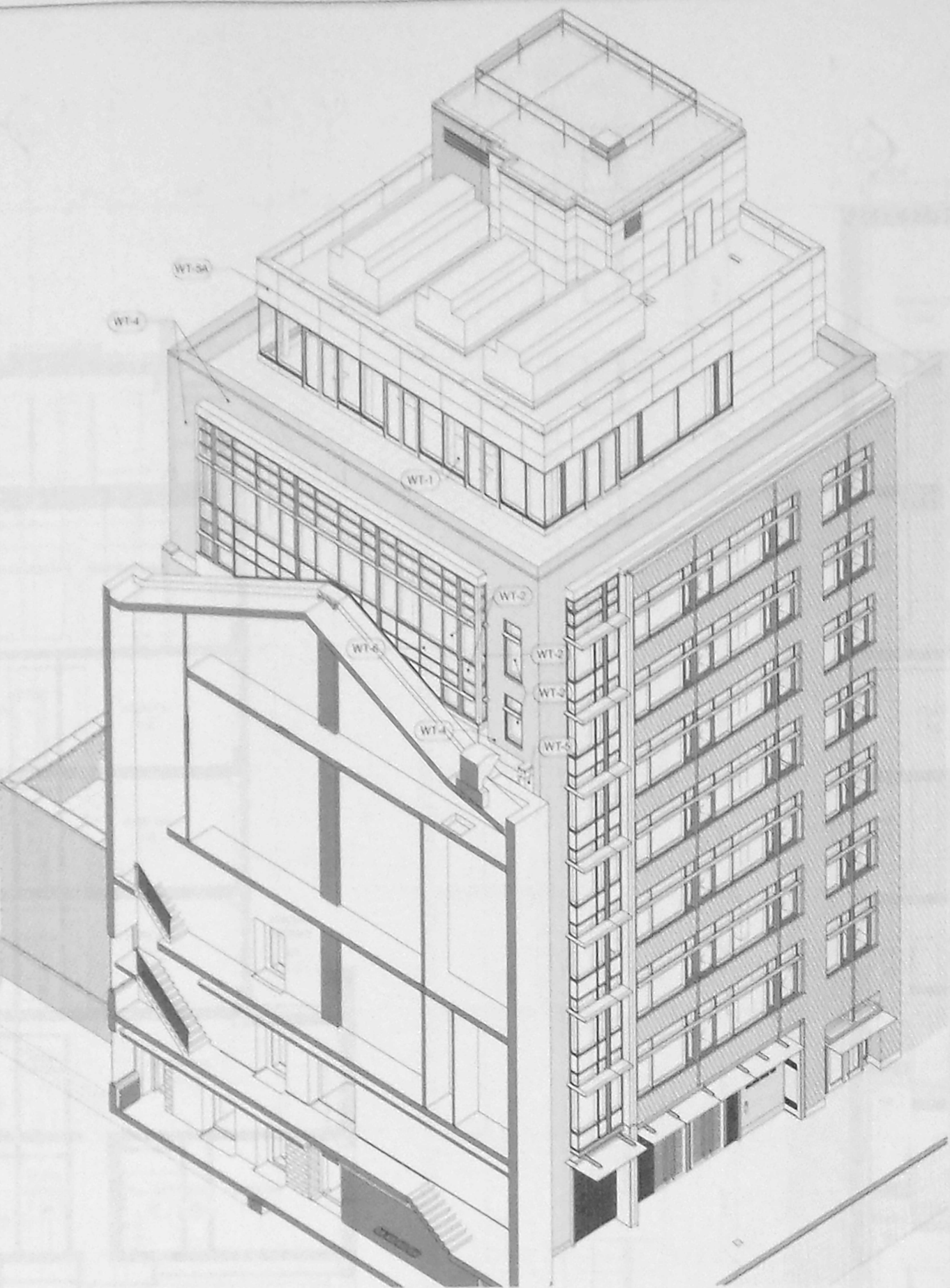
11'-4"

15'-10"



NORTH ELEVATION

JULY, 2013



NE AXONOMETRIC VIEW